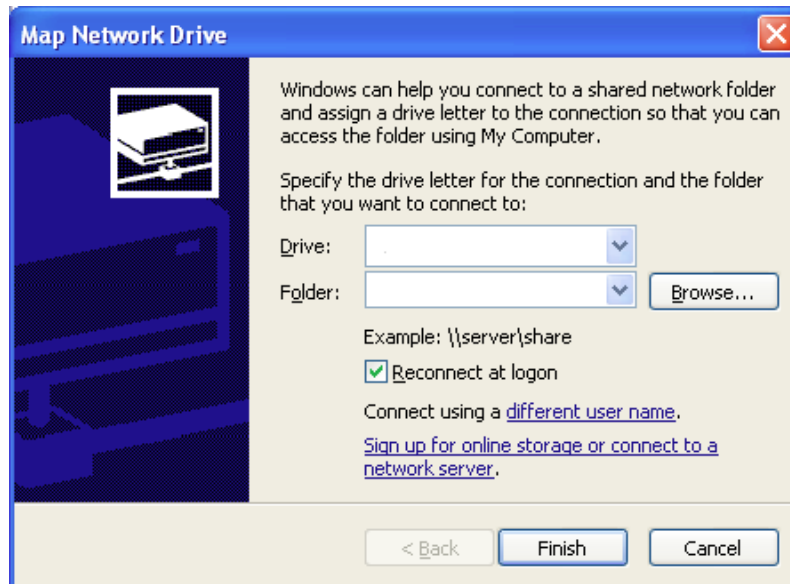


## 1. Internal access

You may mount your home directory immediately from Windows. You can do this by using the "Map network drive ..." from the Windows File Explorer:



Drive = W:

Folder = \\172.18.0.5\<>username<

The field <username> has to be replaced with your IAM username in **lowercase!**

You **must** click on "different user name" and fill in the following information:

Username = <IAM username>

Password = <matricule13>

The password is in any case your social ID "matricule" with 13 symbols.

You are allowed to store any project related files onto this server. All files you put into your home folder are immediately visible from the internet. You can access the web server using your preferred browser at the following URL:

`http://172.18.0.5/<class>/<username>`

The field <class> is the abbreviation of your class, e.g. T2IF2, 12GI, ...

If you don't want to do these steps each time, you may also create yourself a `connect.bat` file which you can start by double clicking it. Put the following content inside this file:

```
net use w: \\172.18.0.5\<>IAM username> /USER:<IAM-username> *
```

Each time you start the file, it will ask you to enter your password before the mapping will be made (the black window will close automatically). If you don't want to enter your password each time, you could write it to the file (not recommended but possible).

```
net use w: \\172.18.0.5\<>IAM username> /USER:<IAM-username> <matricule13>
```

## 2. Database access

---

Your MySQL account information is the following:

Server = 127.0.0.1  
Username = <IAM username>  
Password = <matricule13>  
Database = <IAM username>

In order to manage your database, phpMyAdmin has been installed as well on the server. You can find it here:

`http://172.18.0.5/phpMyAdmin`

## 3. External access

---

The server is also accessible from the Internet. It's external address is `foxi.ltam.lu`, so you just need to point your browser to this URL to access your project page:

`https://foxi.ltam.lu/<class>/<username>`

Your folder is password protected. Please use your IAM login to access it. If you ever wish to show someone your work, you may copy it over to the `public` folder, which is contained in your document root. All its content is not protected by any login.

`http://foxi.ltam.lu/<class>/<username>/public`

- or -

`http://<username>.foxi.lu`

Notice however, that for security reasons, this folder cannot be accessed from the internal network, so from inside the classroom.

To access phpMyAdmin from the outside:

`https://foxi.ltam.lu/phpMyAdmin`

If you want to access your files from the outside, you can upload them using any SFTP capable client (Filezilla, WinSCP, CyberDuck ...) on the servers public address (Port 22) and using your account credentials.

## 4. Logging

---

Each user has his own error log file for PHP error, which is located in the following location:

```
/www/<class>/<username>/log/error.log
```

The best way to display it, is using a terminal (like Putty) and tailing it on the screen:

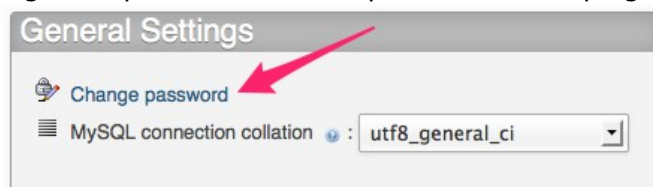
```
tail -f /www/<class>/<username>/log/error.log
```

## 5. Changing your password

---

You are strongly advised to change your password as soon as possible! To do this, use "putty" to connect with your credentials to the server. Execute the following commands:

1. `passwd`  
With this command you can change your default shell password. This is the password you use to connect the server from outside using any SFTP client or using Putty.
2. `smbpasswd`  
With this command, you change your "Windows share password". This is the password you use to mount your home folder in Windows.
3. To change the database password, please use the link inside the phpMyAdmin interface. Change this password **before** you start developing!



## 6. Debugging

---

You may not get a remote SSH connection to the FOXI server, so please follow the here described instructions before contacting the system administrator:

1. Try to ping the FOXI server by using the following command:

```
ping foxi.ltam.lu
```

If you get no response:

1. Check your internet connectivity by pining some other server like e.g. Google.
  2. Make sure your firewall is not blocking ICMP ping packages.
  3. The FOXI server may be down or is unreachable from your location. You may contact the system administrator.
2. Try to telnet to the port 22 of the FOXI server by using this command

```
Linux/Mac: telnet foxi.ltam.lu 22
```

```
Windows: telnet foxi.ltam.lu:22
```

Your should see something like "SSH-2.0-OpenSSH\_6.7p1 Debian-5+deb8u3". If that is not the case:

1. Make sure your firewall is not blocking outgoing TCP/IP packets from your station at destination of the FOXI server.
  2. The FOXI server may be down or is unreachable from your location. You may contact the system administrator.
3. Try to open a terminal to the FOXI server using Putty (Windows) or by entering the following command in your terminal (replace <username> by your real username):

```
ssh <username>@foxi.ltam.lu
```

If you do not get asked for you password but see instead a message like "Server unexpectedly closed network connection", your IP address has been blocked because of too many failed logins. You should do this:

1. Restart you modem in order to get a new IP address and try again.
  2. If you do not get a new IP address, you have probably a static one. In that case mail it to the system administrator in order to get it whitelisted.
4. Contact the system administrator but don't forget to feed him with a very detailed an accurate description of your problem. Don't expect to get any concrete help out of a simple "it doesn't work"!